



## MEETINGS & EVENTS



DALMAHOY  
HOTEL & COUNTRY CLUB  

---

EDINBURGH

# DISCOVER A UNIQUE SCOTTISH SETTING WHERE PROFESSIONALISM MEETS PERFECTIONISM

Just twenty minutes from Edinburgh's city centre.

If you're looking for a unique venue which makes a memorable first impression, boasts a rich history and looks distinctly Scottish, then Dalmahoy is the place to choose.

Conveniently located just ten minutes from Edinburgh Airport and twenty minutes from the city centre, Dalmahoy is easily accessible for delegates travelling by air, road or rail. There are over 300 complimentary parking spaces as well as a heli pad for those looking to arrive in style.

Originally a Scottish Baronial Manor house, Dalmahoy offers meetings and events that are altogether unique. Our devoted team can design tailor-made options to build the perfect event for you.

Rooms suitable for groups from as few as 6 to as many as 300 people.

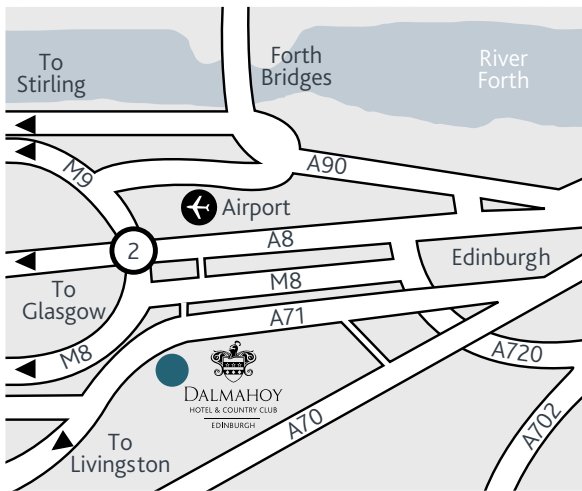




# DALMAHOY

HOTEL & COUNTRY CLUB

EDINBURGH



## Directions

Dalmahey can be found approximately seven miles west of Edinburgh on the A71. Edinburgh Airport is only three miles away. The nearest mainline stations are Edinburgh Haymarket or Edinburgh Park.

For more information please contact our  
Conference & Events Co-ordinator  
t: 44 (0) 131 333 1845

e: [conferenceandevents@dalmahoyhotelandcountryclub.co.uk](mailto:conferenceandevents@dalmahoyhotelandcountryclub.co.uk)

# FUNCTION ROOMS @ DALMAHOY



DALMAHOY  
HOTEL & COUNTRY CLUB  
EDINBURGH

Bespoke options available  
to tailor our luxury  
Edinburgh venue to your  
specification

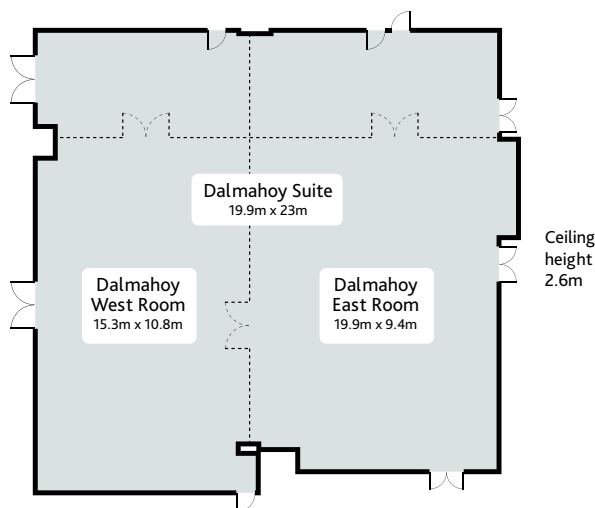
Our function rooms are located within the original Baronial Manor House (built in 1726) and can be laid out to meet your precise requirements. From the thistle-adorned carpet of the Dalmahoy Suite (with innovative lighting and AV capabilities) to the individual character of the smaller rooms upstairs in the house, there's something for every occasion.

# DALMAHOY SUITE



Our main function suite for large conferences, meetings, exhibitions or dinners

Newly refurbished with a feature carpet and innovative state-of-the-art lighting & AV equipment, the suite can cater **for up to 300** guests or can be split into 2 or 3 smaller rooms (Dalmahoy East or West), catering **for between 50 & 100** people depending on the chosen set up.



## KEY FEATURES

- Natural light
- Air conditioning
- Feature lighting
- Built in AV equipment
- Private bar
- Outside patio
- Loading bay for large equipment or staging

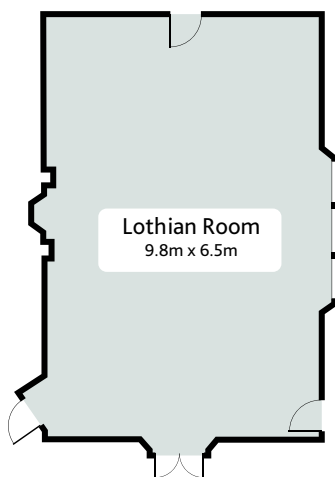
*Please see our Capacity Chart on page 23 for more information on room dimensions & capacities for different set-up types.*

# LOTHIAN ROOM



## Located in the original manor house

This large and spacious room boasts original period features including huge windows, high ceilings, chandeliers, original fireplace and artwork. Catering **for up to 50 people** (depending on set-up style chosen) this room is ideal for a private dinner, training event or as a breakout room.



Ceiling height 4.25m

## KEY FEATURES

- Natural light
- Air conditioning
- Period features
- Golf course views

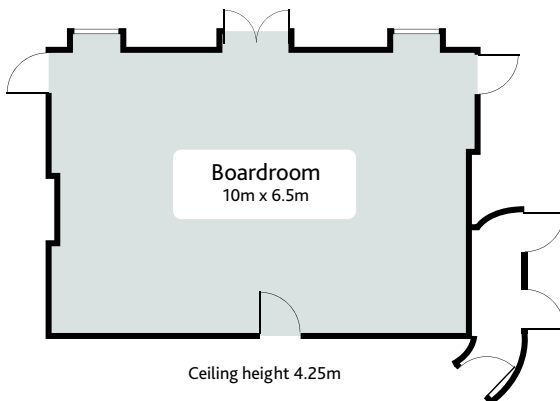
*Please see our Capacity Chart on page 23 for more information on room dimensions & capacities for different set-up types.*

# BOARDROOM



With views of Edinburgh Castle and the championship course, it's an impressive setting to wow your guests

With patio doors leading outside to our feature spiral staircase, this room is perfect for a private dinner, board meeting or training event **for up to 40 people**. Also located within the original baronial manor house and boasting original periods features, this room was once the family dining room.



## KEY FEATURES

- Natural light
- Castle & golf course views
- Period features
- Feature spiral staircase (outside)

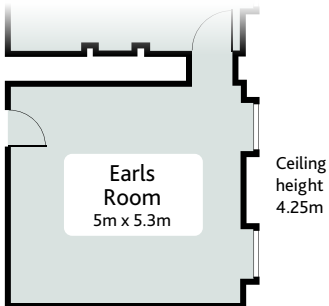
*Please see our Capacity Chart on page 23 for more information on room dimensions & capacities for different set-up types.*

# EARLS ROOM



## Perfect for a board meeting or as a small breakout room

The Earls room is one of the few in the area to have an original oak round table seating **up to 10 people**. If you want to look into everyone's eyes during the meeting so that discussions can flow freely, then this room is ideal.



### KEY FEATURES

- Natural light
- Golf course views
- Period features
- Oak round table
- Inter-connecting

*Please see our Capacity Chart on page 23 for more information on room dimensions & capacities for different set-up types.*

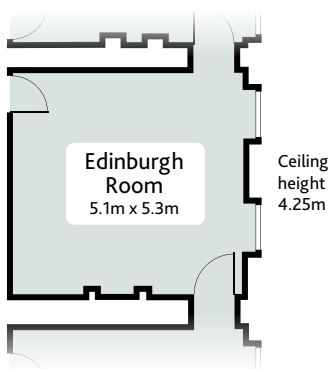


# EDINBURGH ROOM



Compact and intimate, ideal for holding small team meetings or interviews

This room is compact and intimate, ideal for holding small team meetings or interviews. Seating **up to 8 people**, this room can also inter-connect with the Earls or Queens room (if required) and has an area within for us to lay out tea, coffee and breaks.



## KEY FEATURES

- Natural light
- Golf course views
- Period features
- Inter-connecting

*Please see our Capacity Chart on page 23 for more information on room dimensions & capacities for different set-up types.*

# QUEENS ROOM

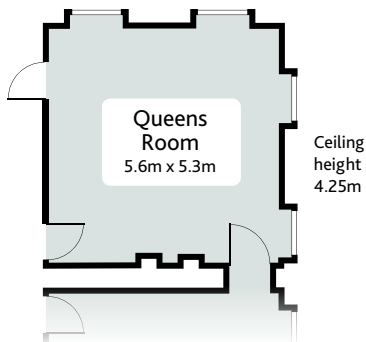


This corner room looks out over the golf course and to Edinburgh Castle and seats up to 8 people.

What will really strike you about this room are the amazing views and natural light from the 4 sash & case windows. This corner room looks out over the golf course and to Edinburgh Castle (on a clear day). So if you're having a planning meeting or strategy days and need some great views to provide inspiration, then this room is perfect. Seating **up to 8 people**, this room can also inter-connect with the Edinburgh or Boardroom (if required) and has an area within for us to lay out tea, coffee and breaks.

## KEY FEATURES

- Natural light
- Castle & Golf course views
- Period features
- Inter-connecting



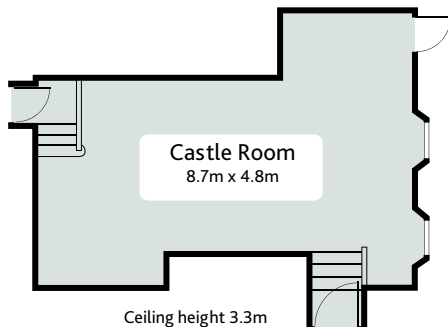
*Please see our Capacity Chart on page 23 for more information on room dimensions & capacities for different set-up types.*

# CASTLE ROOM



Suited to hosting a breakout session, training course or board meeting for up to 20 people.

Located within the original manor house, the Castle room has views of Edinburgh Castle (on a clear day) and out over our championship golf course. Suited to hosting a breakout session, training course or board meeting for **up to 20 people**, this room interconnects with the Salisbury room (if required) and has a door leading outside to the grounds too. There are some steps down into this room and so would not be suitable for some guests with certain mobility issues.



## KEY FEATURES

- Natural light
- Golf course views
- Period features
- Inter-connecting

*Please see our Capacity Chart on page 23 for more information on room dimensions & capacities for different set-up types.*

# SALISBURY ROOM

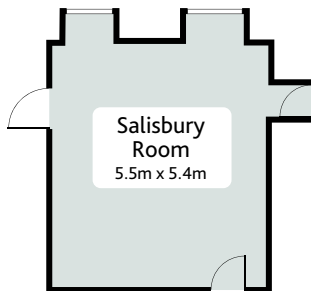


A small, cosy room which can be used as a private room for a team meeting, dinner or training session for up to 10 people

A small, cosy room which sits between the Boardroom & Castle Room, with great views over the grounds and to Edinburgh Castle (on a clear day). This room is often used alongside the Boardroom to lay out a lunch or dinner buffet for guests using the Boardroom. It can also be used as a private room for a team meeting, dinner or training session for **up to 10 people**.

## KEY FEATURES

- Natural light
- Castle & Golf course views
- Period features
- Inter-connecting



Ceiling height 4.25m

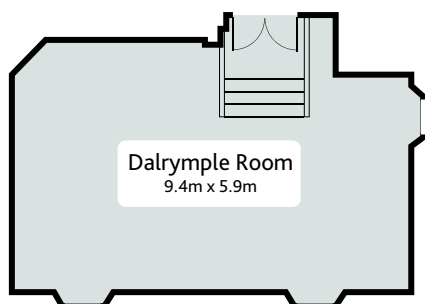
*Please see our Capacity Chart on page 23 for more information on room dimensions & capacities for different set-up types.*

# DALRYMPLE ROOM



Perfect for private dinner parties, breakout sessions or a team meeting for up to 30 people

There are some steps down into this room and so would not be suitable for some guests with certain mobility issues.



Ceiling height 3m

## KEY FEATURES

- Natural light
- Estate views
- Period features

*Please see our Capacity Chart on page 23 for more information on room dimensions & capacities for different set-up types.*

# FOOD & DRINK



## Celebrating the best of Scottish food and drink, for any occasion

Feasting on fine food and drink has long been a way to mark any meeting or event. With a history like Dalmahoy Hotel & Country Club's, it's hard not to indulge. Impress clients or colleagues with a wide range of mouth-watering dishes. Refreshing breaks, lavish lunches and divine dinners can all be arranged by our devoted team.

Our Chefs are committed to the highest standards, creating fresh and innovative menus from locally sourced produce. The on-site herb garden and bee hives are just some of the ways we keep our menus local.

For the latest seasonal menus, please contact us and we'll be happy to send them to you.



### Some of the menus available

- Delegate morning & afternoon breaks
- Delegate lunches (including hot & cold buffet options)
- Deli lunches with individual portion sizes
- High tea and afternoon tea
- Scottish themed dinner menus
- Summer BBQ's
- Private dining options

# PACKAGES



## Let creativity flow at Dalmahoy

Choose from one of our carefully designed meetings and events packages to get the most from your event. Alternatively, our devoted team can prepare a bespoke option tailor-made especially for you.

### DAY DELEGATE PACKAGES INCLUDE:

- Main meeting room hire
- Three servings of tea and coffee with a selection of treats from our pastry chef
- Two course lunch
- LED TV with laptop connection
- Iced tap water & sweets
- Unlimited tea & coffee
- Flip chart pad & pens
- Conference pads & pens
- Complimentary Wi-Fi

### 24HR PACKAGES INCLUDE:

- Day Delegate Package
- Overnight accommodation
- Buffet breakfast
- Three course dinner with tea & coffee

# TEAM BUILDING



## Indoor and outdoor options for building teams and breaking down barriers

Whether you'd like a short one-hour high energy filler, a half day experience or a full day event with multiple activities, our experienced partners have a huge variety of events to choose from.

Examples include:

**Country Pursuits:**\* Off-Road Driving, Quad Biking, Clay Pigeon Shooting & Archery

**Outdoor events:** It's a Knockout, Survivor Skills, Family Fun Days, School Sports & more

**Highland Games:** Caber Tossing, Haggis Hurling, Tug O' War, Shot Put, Whisky Tasting, Ceilidh Dancing, Pipes & Drums

**Indoor events:** Strictly Dancing, Samba Drumming, Circus Skills, Short Film Production & many more

**GPS Treasure Hunt:** On-site or Off-site

**Evening Events:** Murder Mystery, Bandeoke, Casino Night, Pub Olympics, Mixology, Whisky Experience, Quiz Night, Race Night and more...

*\* Delivered off-site at a nearby facility, purpose built for these activities.*

### Learning & Development

Delivered by specialised consultants and designed to improve the performance and effectiveness of individuals, teams and organisations. Consultants can be used for organisation diagnostic, programme design, on the day facilitation & post event review.

Please contact us for more information on teambuilding and event partners we work with.



# EVENT INSPIRATION

© Maximillion Ltd : www.maximillion.co.uk



## Examples of events we've hosted:

**Car launch** of new models from major manufacturers such as Tesla, Audi, VW and more. Cars can be driven into the Dalmahoy Suite via the large events loading bay from the car park. Other cars can be positioned on the long drive to the main house, with plenty of parking for customers and for test drive cars.

Large national law firm brought staff for a **team building day** which consisted of outdoor Highland Games on the grounds, with Ceilidh Dancing and live entertainment afterwards in the Dalmahoy Suite.

**Training camp** for elite sports teams with video analysis areas, press rooms, team briefing rooms, massage rooms, chill out zones, catering rooms and accommodation for all squad members and support staff. Oriam, the new National Sports Performance Centre at Heriot Watt University, is less than 2 miles from the hotel and we've hosted Elite Club & International Football & Rugby teams in recent years.

Black Tie **charity fundraising event** with ballroom dancing theme for 200 guests, with dancefloor and tables for judges.

**Incentive trip** for a major sports clothing brand, with a programme of meetings and events for staff and spouses over the week. Activities included golf, beauty treatments, whisky distillery visit, Stirling Castle trip, dinner on board Royal Yacht Britannia, Gala Dinner with Ceilidh Band.

Large food & drink wholesaler **conference & exhibition**, with the main space being used for keynote speakers and exhibition space around the side of the room and upstairs in breakout rooms. A full programme of entertainment is laid on for spouses with a Gala Dinner in the evening for all, the Dalmahoy Suite being transformed.

### Event types include:

- Conferences
- Incentive trips
- Exhibitions
- Training camps for sports teams
- Team building
- Product launches
- Gala dinners
- Ceilidh dances
- Charity balls
- Family celebrations
- Award dinners
- Golf clinics

# ACCOMMODATION



## Elegant and timeless

Our 215 elegant bedrooms and suites are stylishly designed to inspire calm and comfort. Nothing is left to chance in our desire to help you feel refreshed, relaxed and recharged. Featuring Dalmahoy's thicker mattress, softer designer duvet and deeper, fluffier pillows ensure a peaceful night's sleep.

## Attentive to your needs

Equipped with 32 inch flat-screen televisions, a choice of films, spacious work areas, high-speed internet access (WiFi) and 24-hour room service, you'll be able to catch up on emails or stay abreast of events in luxury. Many of our guest rooms offer views across sweeping fairways or beautiful gardens and woodland.



# LEISURE



## The leisure principle

Overnight guests can work up a sweat or wind down gently with our extensive complimentary leisure facilities.

Take a refreshing plunge in our swimming pool, or simply relax in the sauna and steam room. With a fully equipped gym featuring a wide range of resistance and cardiovascular equipment, as well as floodlit tennis courts, there's everything you need to stay at the top of your game.



## Heavenly beauty

Devote time to yourself with a tempting array of luxurious therapies at Beauty Essentials at Dalmahoy. For an additional fee, indulge in soothing massages, nourishing facials, aromatherapy sessions, relaxing body wraps and scrubs. With Decléor, CARITA and ESPA products, you'll feel the stress evaporate as you become calm and cleansed in tranquil surroundings.



## Impress clients and colleagues with your golf event in a historic Scottish setting

We understand that your corporate or charity golf event is important to you, whether a reward for staff or an investment in client relations. Our aim is to make your event a truly memorable and enjoyable experience. Our location is not only a spectacular stage for your event, but you will also be supported by our expert team dedicated to ensuring your event runs like clockwork.

### Personalise Your Event

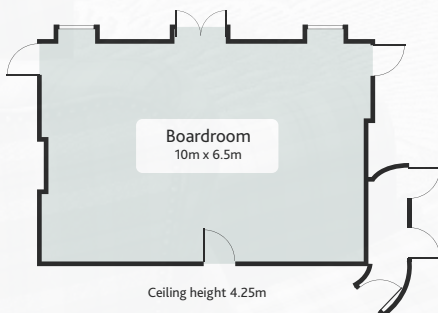
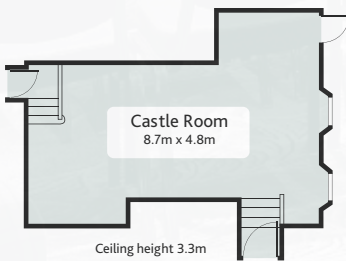
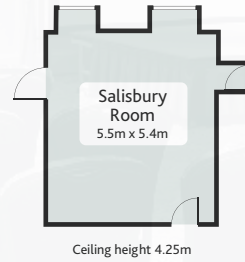
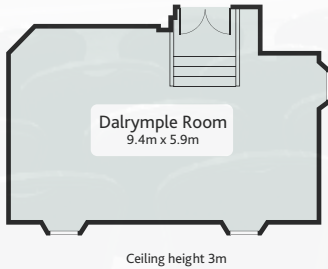
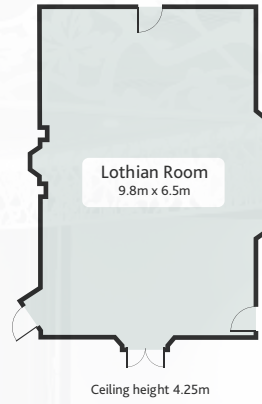
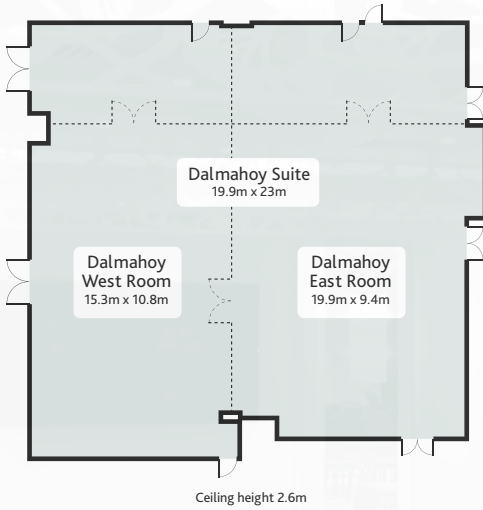
There are a host of options for you to personalise your event depending on your event purpose and desired outcomes.

We can advise on aspects such as:

- Resort branding
- Branded merchandise
- Videographer with blooper reel
- Beat the pro
- Club cleaning service
- Electronic scoring systems and live leaderboards
- Golf clinics and trick shows
- On-course food & beverage options, and much more

### KEY FEATURES CAN INCLUDE:

- Breakfast rolls served with tea & coffee to start your day
- Registration and scoring by our experienced team
- Gift packs for your guests
- Pre-round basket of balls for the driving range
- Longest drive & nearest the pin markers
- Beat the Pro challenge
- Post round meal or BBQ in a private setting



# DALMAHOY FUNCTION ROOMS

## Features, Dimensions and Capacity

MEETING ROOM	Dalmahoy Suite	Dalmahoy West	Dalmahoy East	Lothian	Boardroom	Dalrymple	Castle	Salisbury	Edinburgh	Earts	Queens
<b>Features</b>											
Natural Daylight	✓	✓		✓	✓	✓	✓	✓	✓	✓	✓
Air Conditioning	✓	✓	✓	✓							
Wheelchair Access	✓	✓	✓	✓	✓			✓	✓	✓	✓
<b>Dimensions (Metres)</b>											
Length	19.9	15.3	19.9	9.8	10	9.4	8.7	5.5	5.1	5	5.6
Width	23	10.8	9.4	6.5	6.5	5.9	4.8	5.4	5.3	5.3	5.3
Height	2.6	2.6	2.6	4.25	4.25	3	3.3	4.25	4.25	4.25	4.25
<b>Capacity</b>											
Theatre Style (Front Projection)	260	100	100	50	40	30	16	-	-	-	-
(Back Projection)	240	80	80	-	-	-	-	-	-	-	-
Boardroom Style	-	50	50	24	24	20	14	12	10	10	10
U-Shape	-	40	40	24	24	16	10	-	-	-	-
Classroom Style (Front Projection)	120	50	50	30	25	12	12	-	-	-	-
(Back Projection)	100	40	40	-	-	-	-	-	-	-	-
Cabaret Style (Front Projection)	160	60	60	35	25	20	12	-	-	-	-
(Back Projection)	140	40	40	-	-	-	-	-	-	-	-
Buffet Reception	300	120	120	50	40	30	20	-	-	-	-
Dinner	300	80	80	50	40	30	20	-	10	10	10
Dinner/Dance	250	-	-	-	-	-	-	-	-	-	-

For more information please contact our  
 Conference & Events Co-ordinator  
 t: 44 (0) 131 333 1845  
 e: [conferenceandevents@dalmahoyhotelandcountryclub.co.uk](mailto:conferenceandevents@dalmahoyhotelandcountryclub.co.uk)



DALMAHOY  
HOTEL & COUNTRY CLUB  
EDINBURGH

## MEETINGS & EVENTS @ DALMAHOY

For more information or to make an enquiry  
please call our dedicated conference and events team on

0131 333 1845

or email

[conferenceandevents@dalmahoyhotelandcountryclub.co.uk](mailto:conferenceandevents@dalmahoyhotelandcountryclub.co.uk)

[dalmahoyhotelandcountryclub.co.uk](http://dalmahoyhotelandcountryclub.co.uk)